

# St. John Corridors Plan

101st Ave, Calumet Ave, & 109th Ave

**Recap: March 9th Community Open House**

# March 9th Community Open House Recap

- Nearly 70 community members participated in the first open house as part of the St. John Corridors Plan at Town Hall on Thursday, March 9, 2023.
- If you missed the open house, please review this recap and then head to [www.StJohnCorridorsPlan.org](http://www.StJohnCorridorsPlan.org) to share your input!



# March 9th Community Open House Recap



- The planning team presented an overview of the process and expected outcomes for the plan ([view the full presentation here](#)).
- Following the presentation and a group Q&A, meeting participants reviewed and provided feedback on a series of exhibit stations around the room.
- Discussion focused on needs for the corridors, as well as assets and concerns for the future.



# St. John Corridors Plan

**Vote with ● for images you like, and ● for images you dislike.**

101st Ave, Calumet Ave, & 109th Ave

*Photo for working along - Will need to add more like this photo*

VOTE ●●●●●

VOTE ●●●●●

VOTE ●●●●●

VOTE ●●●●●

VOTE ●●●●●

VOTE ●●●●●

*Where there are wetlands put Bridge Sidewalk Like picture above*

VOTE ●●●●●

VOTE ●●●●●

**Describe what you like or dislike about the image examples.**

*Multilevel landscaping  
- Seemed like public landscape  
- looking up light  
- don't know  
- some signage  
- some signage  
- public (apparently)*

*I heard a lot about landscaping  
- someone has to take care of it  
- lighting costs  
- moved here from IL because of taxes*

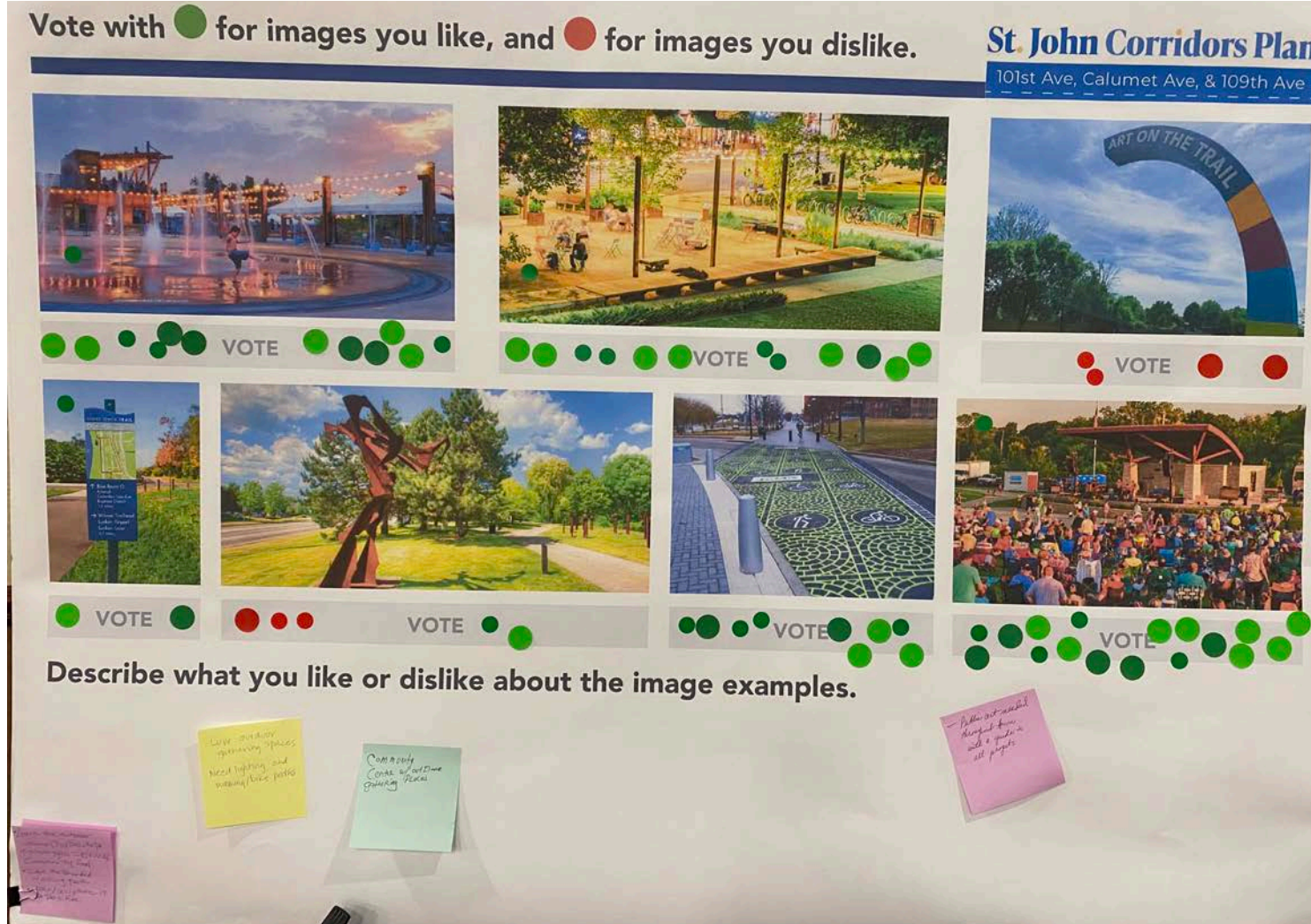
*Like landscaping  
- nice look in fall  
- public space*

*Having native plants in garden  
- side of Roadside  
- great  
- more planting space*

- Need walking paths along US 41, connect with bike paths
- Need pedestrian bridge over wetland area
- Boulevards?
- Branding is important
- Need consistent lighting, signage
- Upgrade signage at key entry points
- Consider cost to maintain landscaping, lighting, fixtures
- Include native planting on the side of roads + medians
- Encourage open, inviting spaces (gathering places)

4

# Community Design & Streetscape



**Input Summary:** Gathering space is highly desired with creative, customized art

## Transcribed Comments:

- Love outdoor gathering spaces but need lighting and walking/bike paths
- Public art needed throughout town with guiding signage
- Love outdoor venue and splash pad, evokes community feel
- Love the branded "distinct" walking path
- Art/sculpture is a positive
- Community center with outdoor gathering places



# Community Design & Streetscape

Vote with ● for images you like, and ● for images you dislike.

**St. John Corridors Plan**  
101st Ave, Calumet Ave, & 109th Ave



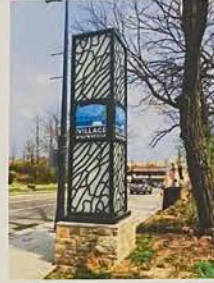
VOTE ● ● ●



● VOTE



● ● ● VOTE ● ● ●



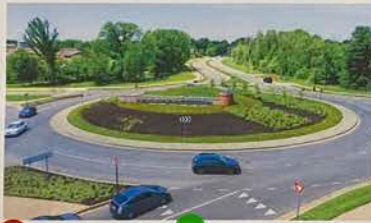
● VOTE ● ● ●



● VOTE ● ● ●



● VOTE ● ● ●



● ● ● VOTE ● ● ●



● ● ● VOTE ● ● ●



● ● VOTE ● ● ●

Describe what you like or dislike about the image examples.

*The town sign examples are generic & outdated.*

*Like the large amount  
of artistic signage  
easy to see  
that makes you  
want to see it  
signage*

## Transcribed Comments:

- Signage around town is generic and outdated
- Need modern or artistic signage that is easy to see; should stay away from non-descriptive signage

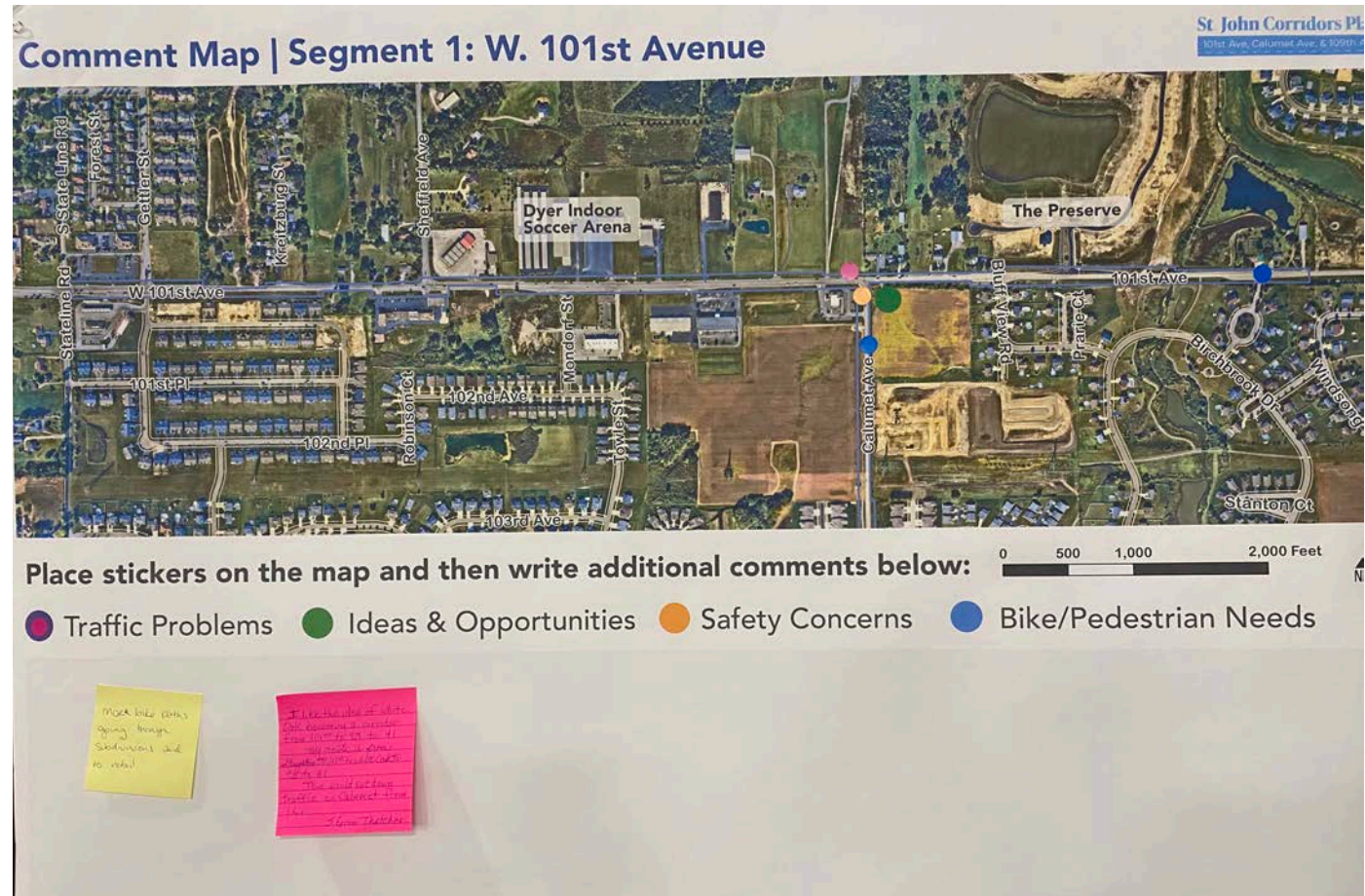
**Input summary:** Update and be more creative with Town signage

## Input summary:

Traffic problems, safety concerns

Bike/pedestrian improvements at Calumet Ave & 101st Ave, Near 101st Ave & Birchbrook Dr. needed

## Mapped Ideas & Concerns



*"More bike paths that lead or go through retail + subdivisions"*



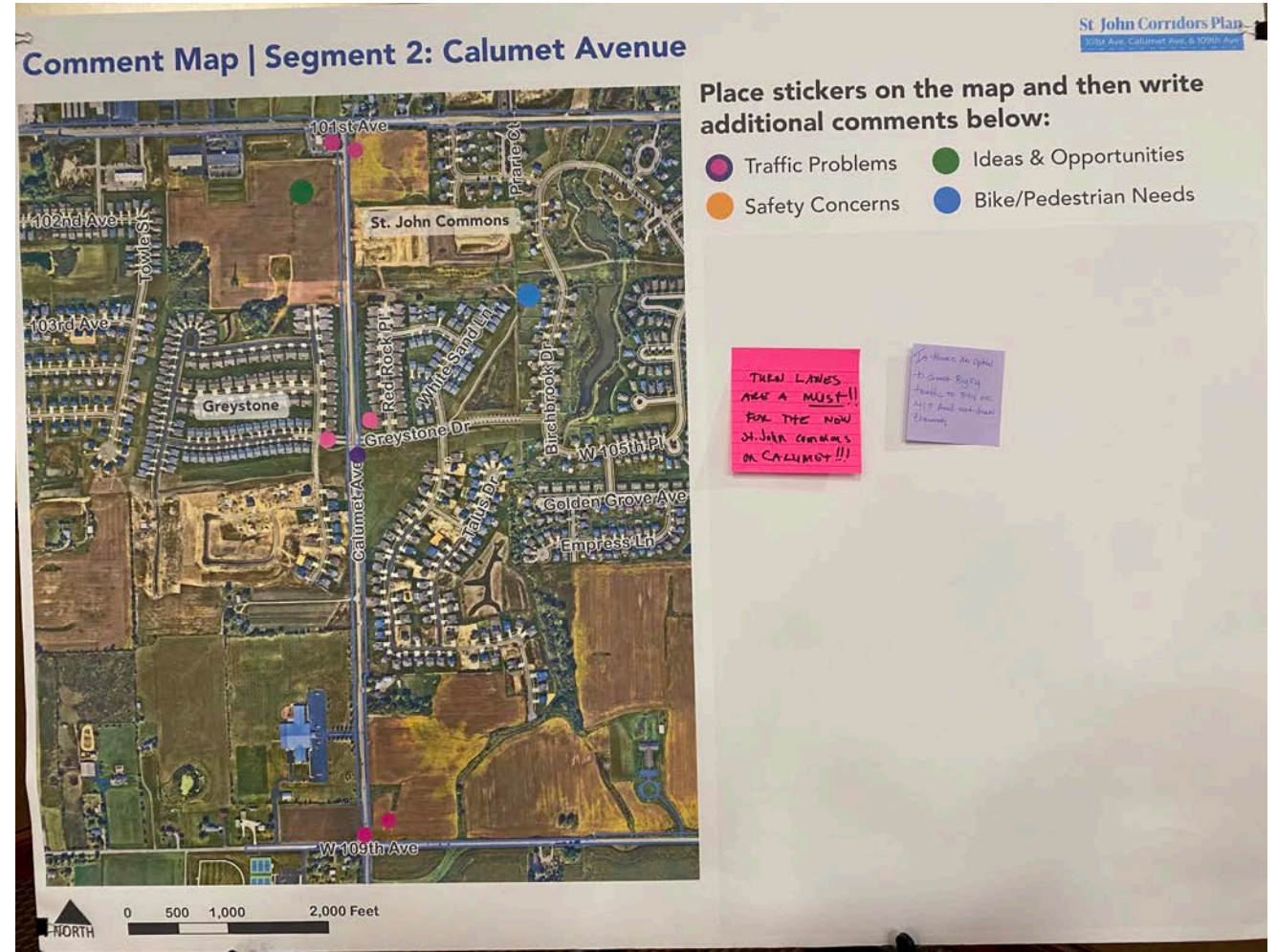
## Input summary:

Turn lanes area needed for St. John Commons

Is there an option to divert Big Rig traffic to 394 or 41 and not down Calumet?

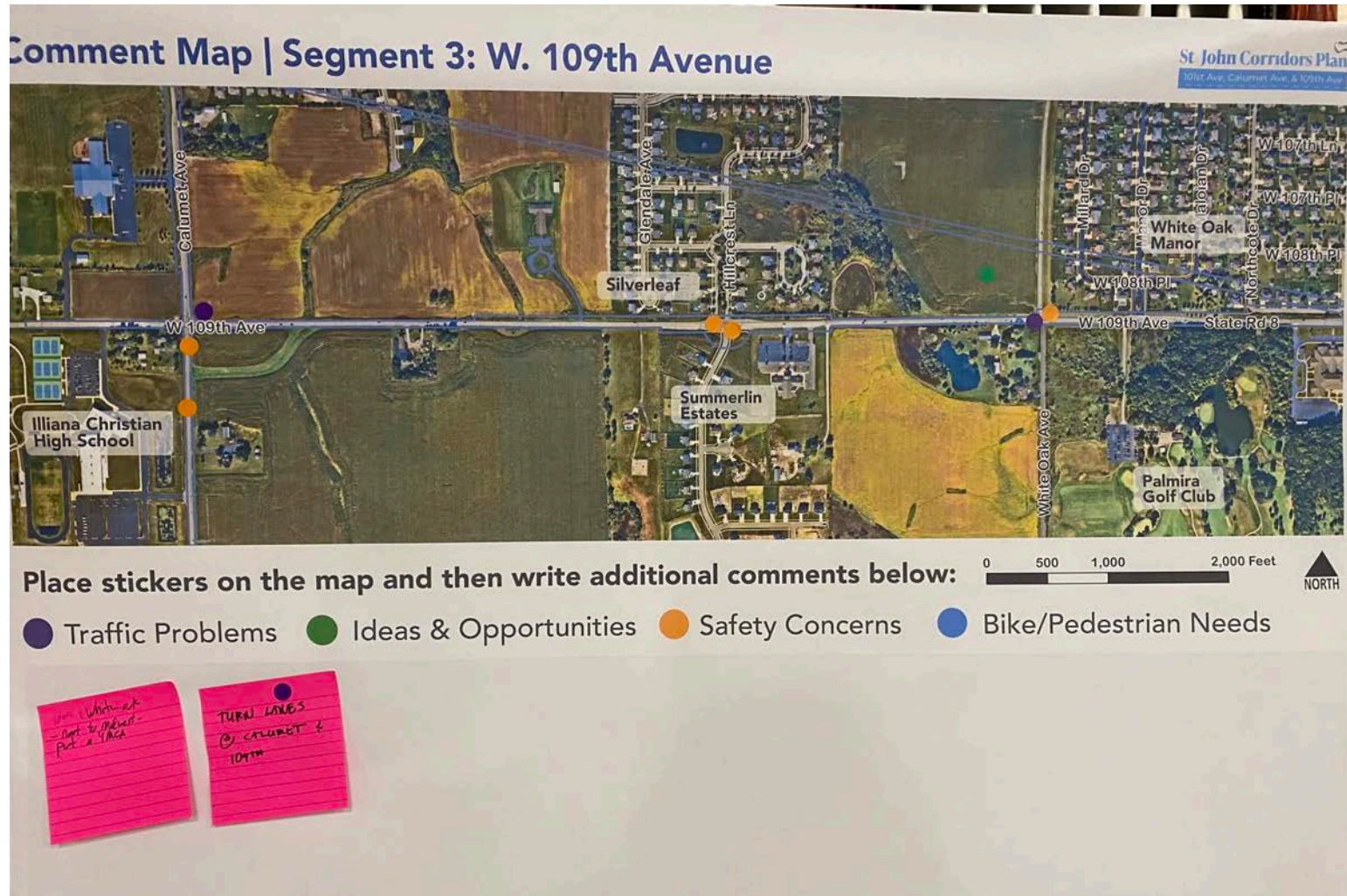
Traffic problems along Calumet Ave at 101st Ave, Greystone Dr, and 109th Ave

## Mapped Ideas & Concerns





## Mapped Ideas & Concerns



## Input summary:

# Safety concerns near Illiana Christian High School, 109th Ave & Hillcrest Ln, 109th Ave & White Oak Ave

# Traffic problems at 109th Ave & Calumet Ave (turn lanes?)

**Opportunity:  
Greenfield site at 109th  
Ave & White Oak Ave  
(YMCA?)**



# Mapped Ideas & Concerns



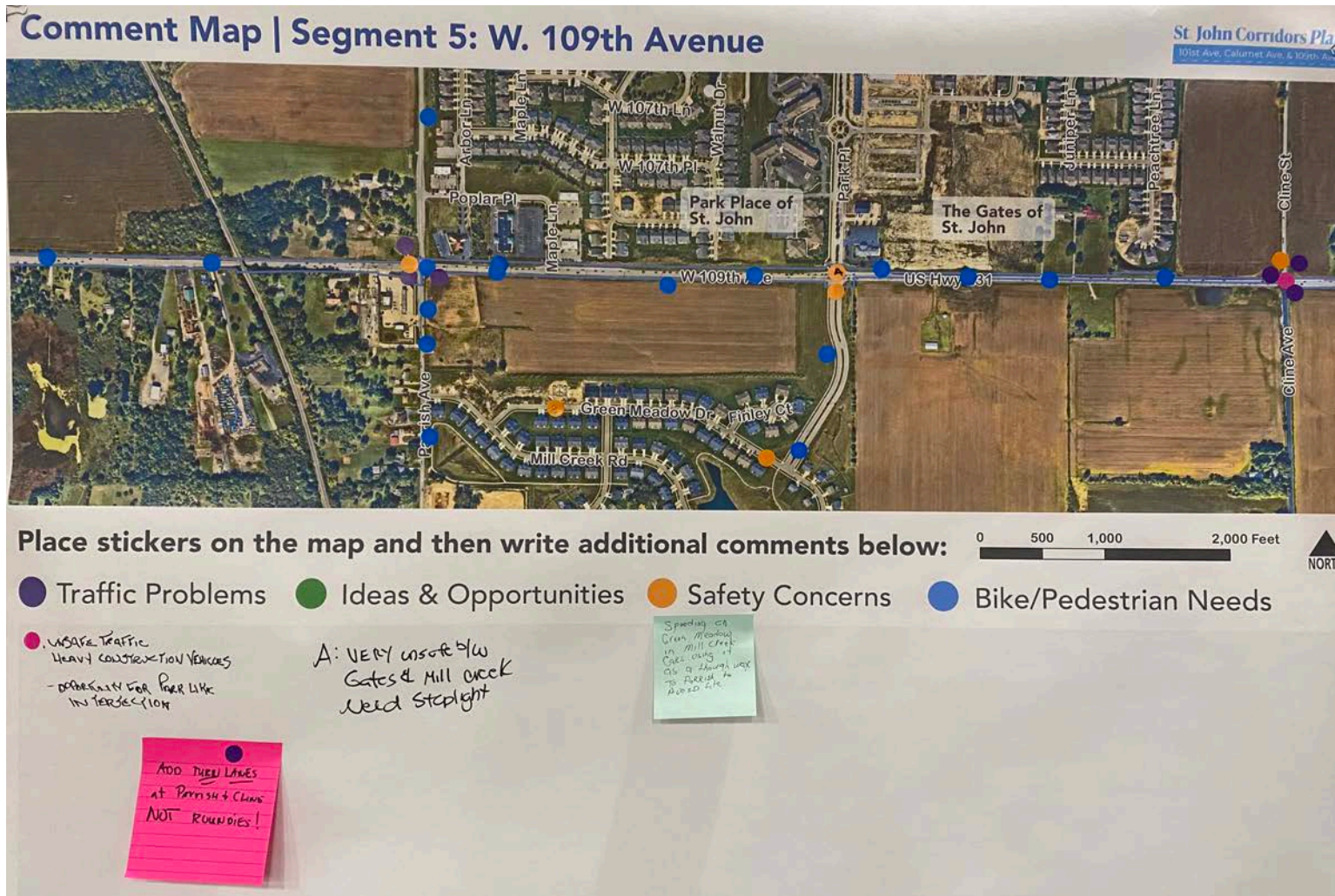
## Input summary:

Plan a network of frontage roads to improve traffic flow (like what Earl Drive does for Wicker Ave); add character to give identity

**Bike/Pedestrian Needs:** Mostly along 109<sup>th</sup> Ave, east of Wicker Ave & north on Wicker Ave



## Mapped Ideas & Concerns



***Bike/Pedestrian Needs: along 109<sup>th</sup> Ave and all along Parish Ave***

## Input summary:

## Add turn lanes at Parrish Ave & 109th Ave and at Cline & 109th Ave

## Speeding on Green Meadow Creek; cars use as through-way to Parrish Ave to avoid traffic light

## Unsafe traffic; large construction vehicles

## Opportunity for a park-like intersection?

**Unsafe between Gates of St. John & Mill Creek Rd; need a stoplight or other traffic calming signage**

# Next Steps

- **Current Conditions:** The project team will finalize a complete current conditions assessment of the three corridors.
- **Draft Goals & Objectives:** Based on the conditions analysis and community input received, the team will draft a set of goals and objectives to become the framework for the plan, followed later by specific recommended improvements.
- **Ongoing Engagement:** Continue to participate and share ideas via the project website! [StJohnCorridorsPlan.org](http://StJohnCorridorsPlan.org)



# Project Timeline

PHASE 1 | WINTER 2022 - FALL 2023  
Community Outreach

PHASE 2 | SPRING 2023  
Current Conditions Analysis

PHASE 3 | SPRING - SUMMER 2023  
Corridors Plan Development

PHASE 4 | SUMMER - FALL 2023  
Plan Preparation & Adoption

# Thank you for your participation!

**Questions?**

**Sergio Mendoza**, Director of Building & Planning  
[smendoza@stjohnin.com](mailto:smendoza@stjohnin.com)

**Francie Lawrence**, AICP, Senior Planner  
[fslawrence@teskaassociates.com](mailto:fslawrence@teskaassociates.com)